



# WORK FOOTWEAR

2017



## ORDER NOW



EMAIL ORDERS:  
[csd@weinbrennerusa.com](mailto:csd@weinbrennerusa.com)



WEBSITE ORDERS:  
DEALERS ONLY  
[weinbrennerusa.com/dealer](http://weinbrennerusa.com/dealer)



PHONE ORDERS:  
800-826-0002



\*Weinbrenner Shoe Company manufactures our Made in USA footwear at its two union factories in Wisconsin. Our Made in USA footwear is either Berry Compliant (100% Made in the USA with USA components) or Made in the USA with domestic and globally sourced components. Our Built in USA footwear uses all American hides and is assembled at our two union factories in Wisconsin.





## SEARCH BY STOCK NUMBER

### Men's Safety

STOCK NUMBER PAGE

804-3165	29
804-3166	29
804-3169	29
804-3266	16
804-3268	17
804-3310	15
804-3366	15
804-3510	21
804-3566	21
804-4035	31
804-4037	31
804-4038	34
804-4061	31
804-4132	37
804-4200	4
804-4203	22
804-4204	22
804-4205	11
804-4208	5
804-4210	12
804-4278	28
804-4279	28
804-4280	12
804-4281	28
804-4291	32
804-4312	37
804-4320	37
804-4364	10
804-4367	19
804-4368	19
804-4369	19
804-4372	15
804-4374	14
804-4375	7
804-4378	7
804-4379	15
804-4440	27
804-4445	27

804-4446 26

804-4448 26

804-4450 25

804-4456 25

804-4459 25

804-4478 6

804-4518 13

804-4541 35

804-4616 36

804-4618 36

804-4655 19

804-4706 20

804-4708 20

804-4710 20

804-4711 23

804-4718 20

804-4721 23

804-4808 33

804-4810 33

804-4812 33

804-4812 37

804-4831 35

804-4841 35

804-6064 31

804-6135 29

804-6201 8

804-6266 17

804-6292 32

804-6293 32

804-6444 27

### Men's Non-Safety

STOCK NUMBER PAGE

814-3165 29

814-3266 17

814-3268 17

814-3566 21

814-4008 12

814-4009 12

814-4178 6

814-4200 4

814-4201 5

814-4203 6

814-4208 11

814-4266 8

814-4269 13

814-4355 10

814-4364 10

814-4370 14

814-4372 15

814-4375 7

814-4516 13

814-4549 22

814-4550 22

814-6201 8

### Women's Safety

STOCK NUMBER PAGE

804-4035 31

804-4061 31

804-4278 28

804-4279 28

804-4281 28

804-4291 32

804-4312 37

804-4320 37

804-4541 35

804-4711 23

804-4808 33

804-6064 31

804-6292 32

804-6293 32

### Women's Non-Safety

STOCK NUMBER PAGE

814-4200 4





**814-4200**  
**6" Moc Toe**  
**Non-Safety**



SOLE 2



889-6007



- » Tobacco oil-tanned leather
- » Removable dual-density Ultimate Shock Absorption™ footbed on Poron® comfort cushion insole

- » Single-density polyurethane MAXwear Wedge™ outsole
- » Goodyear storm welt construction



poron

MEN'S | B 9-12, 13 | D 5-12, 13, 14 | EE 6-12, 13, 14 | WOMEN'S | M 6-9, 10 | W 6-9, 10

**804-4200**  
**6" Moc Toe**  
**Safety Toe**



SOLE 2



889-6007



- » Tobacco oil-tanned leather
- » Removable dual-density Ultimate Shock Absorption™ footbed on Poron® comfort cushion insole

- » Single-density polyurethane MAXwear Wedge™ outsole
- » Goodyear storm welt construction



poron

MEN'S | D 8-12, 13, 14 | EE 8-12, 13, 14





# American Heritage

MADE IN USA\*

The 7261 last was developed in 1987. It was one of the first lasts in the footwear industry specifically engineered to accommodate an athletic-style removable foot-bed in a Goodyear Welt constructed work boot.

The last's toe shape was specifically designed with a high wall to allow for a moccasin toe stitch. It was engineered to fit B, D, EE and 4E widths in an extended range of sizes.

## 814-4201

8" Moc Toe  
Non-Safety



SOLE 2



889-6007



» Tobacco oil-tanned leather  
» Removable dual-density Ultimate Shock Absorption™ footbed on Poron® comfort cushion insole

» Single-density polyurethane MAXwear Wedge™ outsole  
» Goodyear storm welt construction



poron

MEN'S | B 9-12, 13 | D 7-12, 13, 14 | EE 7-12, 13, 14 | 4E 8-12

## 804-4208

8" Moc Toe  
Safety Toe



SOLE 2



889-6007



» Tobacco oil-tanned leather  
» Removable dual-density Ultimate Shock Absorption™ footbed on Poron® comfort cushion insole

» Single-density polyurethane MAXwear Wedge™ outsole  
» Goodyear storm welt construction



poron

MEN'S | D 6-12, 13, 14, 15 | EE 7½-12, 13, 14



\*Our Made in USA footwear is either Berry Compliant (100% Made in the USA with USA components) or Made in the USA with domestic and globally sourced components. Our Built in USA footwear uses all American hides and is assembled at our two union factories in Wisconsin.



**814-4203**  
**6" Brown Moc Toe**  
**Non-Safety**



SOLE 2



889-6007



- » Trail crazyhorse leather
- » Removable dual-density Ultimate Shock Absorption™ footbed on Poron® comfort cushion insole

- » Single-density polyurethane MAXwear Wedge™ outsole
- » Goodyear storm welt construction



poron

MEN'S | D 5-12, 13, 14 | EE 8-12, 13, 14

**814-4178**  
**8" Moc Toe**  
**Non-Safety**



SOLE 2



889-6007



- » Trail crazyhorse leather
- » Removable dual-density Ultimate Shock Absorption™ footbed on Poron® comfort cushion insole

- » Single-density polyurethane MAXwear Wedge™ outsole
- » Goodyear storm welt construction



poron

MEN'S | D 8-12, 13, 14 | EE 8-12, 13, 14

**804-4478**  
**8" Moc Toe**  
**Safety Toe**

NEW



SOLE 2



889-6007



- » Trail crazyhorse leather
- » Removable dual-density Ultimate Shock Absorption™ footbed on Poron® comfort cushion insole

- » Single-density polyurethane MAXwear Wedge™ outsole
- » Goodyear storm welt construction



poron

MEN'S | D 8-12, 13, 14 | EE 8-12, 13, 14



\*Our **Made in USA** footwear is either Berry Compliant (100% Made in the USA with USA components) or Made in the USA with domestic and globally sourced components. Our Built in USA footwear uses all American hides and is assembled at our two union factories in Wisconsin.



804-4375

6" Moc Toe

Safety Toe



SOLE 4



889-6007

- » Trail crazyhorse leather
- » Removable dual-density Ultimate Shock Absorption™ footbed on Poron® comfort cushion insole

- » Single-density polyurethane MAXwear 90 outsole
- » Goodyear storm welt construction



poron

MEN'S | D 8-12, 13, 14 | EE 8-12, 13, 14

814-4375

6" Moc Toe

Non-Safety



SOLE 4



889-6007

- » Trail crazyhorse leather
- » Removable dual-density Ultimate Shock Absorption™ footbed on Poron® comfort cushion insole

- » Single-density polyurethane MAXwear 90 outsole
- » Goodyear storm welt construction



poron

MEN'S | D 8-12, 13, 14 | EE 8-12, 13, 14

**MAXwear 90**

Thorogood's  
EXCLUSIVE MAXwear  
Outsole with a  
» 90° HEEL «

804-4378

8" Moc Toe

Safety Toe



SOLE 4



889-6007

- » Trail crazyhorse leather
- » Removable dual-density Ultimate Shock Absorption™ footbed on Poron® comfort cushion insole

- » Single-density polyurethane MAXwear 90 outsole
- » Goodyear storm welt construction



poron

MEN'S | D 7-12, 13, 14 | EE 7-12, 13, 14



\*Our Made in USA footwear is either Berry Compliant (100% Made in the USA with USA components) or Made in the USA with domestic and globally sourced components. Our Built in USA footwear uses all American hides and is assembled at our two union factories in Wisconsin.

AMERICAN HERITAGE • MADE IN USA\*

814-4266

6" Moc Toe

Non-Safety



SOLE 3



- » Black walnut oil-tanned leather
- » Removable polyurethane footbed on Poron® comfort cushion insole

- » Single-density polyurethane MAXwear Wedge™ outsole
- » Goodyear storm welt construction



poron

MEN'S D 6-12, 13, 14 EE 7-12, 13, 14

814-6201

6" Moc Toe

Non-Safety



SOLE 2



889-6007

- » Black oil-tanned leather
- » Removable dual-density Ultimate Shock Absorption™ footbed on Poron® comfort cushion insole

- » Single-density polyurethane MAXwear Wedge™ outsole
- » Goodyear storm welt construction



poron

MEN'S D 5-12, 13, 14 EE 6-12, 13, 14

804-6201

6" Moc Toe

Safety Toe



SOLE 2



889-6007

- » Black oil-tanned leather
- » Removable dual-density Ultimate Shock Absorption™ footbed on Poron® comfort cushion insole

- » Single-density polyurethane MAXwear Wedge™ outsole
- » Goodyear storm welt construction



poron

MEN'S D 8-12, 13 EE 8-12, 13



\*Our **Made in USA** footwear is either Berry Compliant (100% Made in the USA with USA components) or Made in the USA with domestic and globally sourced components. Our Built in USA footwear uses all American hides and is assembled at our two union factories in Wisconsin.





# American Heritage

MADE IN USA\*

Thorogood's plain toe last was developed in the early 1950s. The main purpose of this last was to provide toe room for workers that needed to squat and kneel. Initially, the majority of the footwear produced with this last was designed for dairy farmers and roofers. The ample toe room creates its unique shape and is one of the best-fitting lasts that Thorogood uses.

## AMERICAN HERITAGE • WEDGES

814-4355

6" Plain Toe  
Non-Safety



SOLE 2



889-6007



- » Tobacco oil-tanned leather
- » Removable dual-density Ultimate Shock Absorption™ footbed on Poron® comfort cushion insole
- » Single-density polyurethane MAXwear Wedge™ outsole
- » Goodyear storm welt construction



poron

MEN'S D 5½-12, 13, 14 EE 6-12, 13, 14 4E 8-12



Thorogood's  
EXCLUSIVE MAXwear  
OUTSOLE

814-4364

8" Plain Toe  
Non-Safety



SOLE 2



889-6007



- » Tobacco oil-tanned leather
- » Removable dual-density Ultimate Shock Absorption™ footbed on Poron® comfort cushion insole
- » Single-density polyurethane MAXwear Wedge™ outsole
- » Goodyear storm welt construction



poron

MEN'S B 9-12, 13, 14 D 7-12, 13, 14 EE 7-12, 13, 14 4E 8-12

804-4364

8" Plain Toe  
Safety Toe



SOLE 2



889-6007



- » Tobacco oil-tanned leather
- » Removable dual-density Ultimate Shock Absorption™ footbed on Poron® comfort cushion insole
- » Single-density polyurethane MAXwear Wedge™ outsole
- » Goodyear storm welt construction



poron

MEN'S D 7-12, 13, 14 EE 7½-12, 13, 14 EEE 8-12, 13



\*Our Made in USA footwear is either Berry Compliant (100% Made in the USA with USA components) or Made in the USA with domestic and globally sourced components. Our Built in USA footwear uses all American hides and is assembled at our two union factories in Wisconsin.





**814-4208**  
**Wellington**  
**Non-Safety**



SOLE 2



889-6007



- » Tobacco oil-tanned leather
- » Removable dual-density Ultimate Shock Absorption™ footbed on Poron® comfort cushion insole

- » Single-density polyurethane MAXwear Wedge™ outsole
- » Goodyear storm welt construction



poron

**MEN'S** | D 7-12, 13, 14 | EE 7-12, 13, 14

**804-4205**  
**Wellington**  
**Safety Toe**



SOLE 2



889-6007



- » Tobacco oil-tanned leather
- » Removable dual-density Ultimate Shock Absorption™ footbed on Poron® comfort cushion insole

- » Single-density polyurethane MAXwear Wedge™ outsole
- » Goodyear storm welt construction



poron

**MEN'S** | D 7-12, 13, 14 | EE 8-12, 13, 14



\*Our **Made in USA** footwear is either Berry Compliant (100% Made in the USA with USA components) or Made in the USA with domestic and globally sourced components. Our Built in USA footwear uses all American hides and is assembled at our two union factories in Wisconsin.

# AMERICAN HERITAGE • WEDGES

AMERICAN HERITAGE • PLAIN TOE

814-4008

8" Waterproof Plain Toe  
Non-Safety



SOLE 2



889-6007



- » Tobacco oil-tanned leather
- » Removable dual-density Ultimate Shock Absorption™ footbed
- » X-Stream Waterproof® membrane
- » Single-density polyurethane MAXwear Wedge™ outsole
- » Goodyear storm welt construction



MEN'S D 8-12, 13, 14 EE 8-12, 13, 14

804-4210

8" Waterproof Plain Toe  
Composite Safety Toe



SOLE 2



889-6007



- » Tobacco oil-tanned leather
- » Removable dual-density Ultimate Shock Absorption™ footbed
- » X-Stream Waterproof® membrane
- » Single-density polyurethane MAXwear Wedge™ outsole
- » Goodyear storm welt construction



MEN'S D 8-12, 13, 14 EE 8-12, 13, 14

814-4009

8" Waterproof / Insulated Plain Toe  
Non-Safety



SOLE 2



889-6007



- » Tobacco oil-tanned leather
- » Removable dual-density Ultimate Shock Absorption™ footbed
- » X-Stream Waterproof® membrane
- » Single-density polyurethane MAXwear Wedge™ outsole
- » Goodyear storm welt construction



MEN'S D 7-12, 13, 14 EE 8-12, 13, 14 EEE 8-12, 13

804-4280

8" Waterproof/Insulated Plain Toe  
Composite Safety Toe



SOLE 2



889-6007



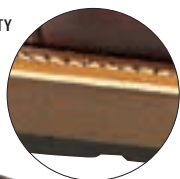
- » Tobacco oil-tanned leather
- » Removable dual-density Ultimate Shock Absorption™ footbed
- » X-Stream Waterproof® membrane
- » Single-density polyurethane MAXwear Wedge™ outsole
- » Goodyear storm welt construction



MEN'S D 8-12, 13, 14 EE 8-12, 13, 14

\*Our Made in USA footwear is either Berry Compliant (100% Made in the USA with USA components) or Made in the USA with domestic and globally sourced components. Our Built in USA footwear uses all American hides and is assembled at our two union factories in Wisconsin.



**814-4516****6" Plain Toe Sport Boot**  
**Non-Safety****DUAL-DENSITY  
OUTSOLE****SOLE 1**

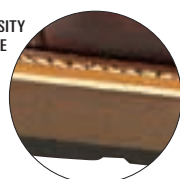
- » Black walnut oil-tanned leather
- » Removable polyurethane footbed on Poron® comfort cushion outsole

- » Dual-density polyurethane MAXwear Wedge™ outsole
- » Goodyear storm welt construction

**EH SR****poron****MEN'S**

D 7-12, 13, 14

EE 8-12, 13, 14

**804-4518****8" Plain Toe**  
**Safety Toe****DUAL-DENSITY  
OUTSOLE****SOLE 1**

- » Black walnut oil-tanned leather
- » Memory cushion insole
- » Removable polyurethane footbed on Poron® comfort cushion outsole

- » Dual-density polyurethane MAXwear Wedge™ outsole
- » Goodyear storm welt construction

**75 EH SR****poron****MEN'S**

D 7-12, 13, 14

EE 8-12, 13, 14

**814-4269****8" Plain Toe**  
**Non-Safety****SOLE 3**

- » Black walnut oil-tanned leather
- » Removable polyurethane footbed on Poron® comfort cushion insole

- » Single-density polyurethane MAXwear Wedge™ outsole
- » Goodyear storm welt construction

**EH SR****poron****MEN'S**

D 7-12, 13, 14

EE 7-12, 13, 14



\*Our **Made in USA** footwear is either Berry Compliant (100% Made in the USA with USA components) or Made in the USA with domestic and globally sourced components. Our Built in USA footwear uses all American hides and is assembled at our two union factories in Wisconsin.



Thorogood's  
**EXCLUSIVE**  
**MAXwear**  
Outsole with a  
**»90° HEEL«**

**804-3366**

**6" Plain Toe**

**Safety Toe**



SOLE 5



- » Trail crazyhorse leather
- » Removable polyurethane footbed on Poron® comfort cushion insole

- » Single-density polyurethane MAXwear 90 outsole
- » Goodyear storm welt construction



poron

MEN'S | D 8-12, 13, 14 | EE 8-12, 13, 14

**814-4370**

**6" Plain Toe**

**Non-Safety**



SOLE 4



889-6007



- » Trail crazyhorse leather
- » Removable dual-density Ultimate Shock Absorption™ footbed on Poron® comfort cushion insole
- » Single-density polyurethane MAXwear 90 outsole
- » Goodyear storm welt construction



poron

MEN'S | D 8-12, 13, 14 | EE 8-12, 13, 14

**804-4374**

**6" Plain Toe**

**Safety Toe**



SOLE 4



889-6007



- » Trail crazyhorse leather
- » Removable dual-density Ultimate Shock Absorption™ footbed on Poron® comfort cushion insole
- » Single-density polyurethane MAXwear 90 outsole
- » Goodyear storm welt construction



poron

MEN'S | D 8-12, 13, 14 | EE 8-12, 13, 14



\*Our **Made in USA** footwear is either Berry Compliant (100% Made in the USA with USA components) or Made in the USA with domestic and globally sourced components. Our Built in USA footwear uses all American hides and is assembled at our two union factories in Wisconsin.



**804-4379****8" Plain Toe****Safety Toe**

SOLE 4



889-6007



- » Trail crazyhorse leather
- » Removable dual-density Ultimate Shock Absorption™ footbed on Poron® comfort cushion insole

- » Single-density polyurethane MAXwear 90 outsole
- » Goodyear storm welt construction



poron

MEN'S | D 8-12, 13, 14 | EE 8-12, 13, 14

**804-3310****11" Wellington****Safety Toe**

SOLE 5



- » Trail crazyhorse leather
- » Removable polyurethane footbed on Poron® comfort cushion insole

- » Single-density polyurethane MAXwear 90 outsole
- » Goodyear storm welt construction



poron

MEN'S | D 7-12, 13, 14 | EE 7-12, 13, 14 | EEE 8-12, 13, 14

**804-4372****11" Wellington****Safety Toe**

SOLE 4



889-6007



- » Trail crazyhorse leather
- » Removable dual-density Ultimate Shock Absorption™ footbed on Poron® comfort cushion insole

- » Single-density polyurethane MAXwear 90 outsole
- » Goodyear storm welt construction



poron

MEN'S | D 8-12, 13, 14 | EE 8-12, 13, 14

**814-4372****11" Wellington****Non-Safety**

SOLE 4



889-6007



- » Trail crazyhorse leather
- » Removable dual-density Ultimate Shock Absorption™ footbed on Poron® comfort cushion insole

- » Single-density polyurethane MAXwear 90 outsole
- » Goodyear storm welt construction



poron

MEN'S | D 8-12, 13, 14 | EE 8-12, 13, 14



\*Our **Made in USA** footwear is either Berry Compliant (100% Made in the USA with USA components) or Made in the USA with domestic and globally sourced components. Our Built in USA footwear uses all American hides and is assembled at our two union factories in Wisconsin.



OMNI™

Go anywhere.  
Do anything.

DURABLE · COMFORTABLE · SECURE

BUILT IN THE USA · UNION-MADE



WORK



DUTY



ADVENTURE

### MULTI-PURPOSE DESIGN

work, hunt, or play in style

### ALL-DAY COMFORT

flexible, lightweight, no break in

### PROTECTION

waterproof, oil- and slip-resistant

804-3266

6" Omni™

Safety Toe

NEW

- » Brown, waterproof, tumbled full-grain leather
- » X-Stream Waterproof® membrane
- » Removable, single-density polyurethane footbed

- » Direct attach construction
- » Thorogood's exclusive dual-density polyurethane OMNI outsole



MEN'S D 8-12, 13, 14 EEE 8-12, 13, 14



814-3266

6" Omni™  
Non-Safety

NEW



SOLE 6



- » Brown, waterproof, tumbled full-grain leather
- » X-Stream Waterproof® membrane
- » Removable, single-density polyurethane footbed

- » Direct attach construction
- » Thorogood's exclusive dual-density polyurethane OMNI outsole



MEN'S D 8-12, 13, 14 EEE 8-12, 13, 14

804-6266

6" Omni™  
Safety Toe

NEW



SOLE 6



- » Black, waterproof, tumbled full-grain leather
- » X-Stream Waterproof® membrane
- » Removable, single-density polyurethane footbed

- » Direct attach construction
- » Thorogood's exclusive dual-density polyurethane OMNI outsole



MEN'S D 8-12, 13, 14 EEE 8-12, 13, 14

814-3268

8" Omni™  
Non-Safety

NEW



SOLE 6



- » Brown, waterproof, tumbled full-grain leather
- » X-Stream Waterproof® membrane
- » Removable, single-density polyurethane footbed

- » Direct attach construction
- » Thorogood's exclusive dual-density polyurethane OMNI outsole



MEN'S D 8-12, 13, 14 EEE 8-12, 13, 14

804-3268

8" Omni™  
Safety Toe

NEW



SOLE 6



- » Brown, waterproof, tumbled full-grain leather
- » X-Stream Waterproof® membrane
- » Removable, single-density polyurethane footbed

- » Direct attach construction
- » Thorogood's exclusive dual-density polyurethane OMNI outsole



MEN'S D 8-12, 13, 14 EEE 8-12, 13, 14



# EMPEROR TOE

Composite Safety Toe  
with Wiggle Room

- Allows toes to flex and move
- Eliminates toe compression and pinching

EMPEROR TOE	VS.	Regular Safety Toe
Extra width Extra height		Normal width Normal height
<p>Room for toes to move</p> <p>LAST #66</p>		<p>Toe compression</p> <p>LAST #4258</p>

Wider AND More Spacious

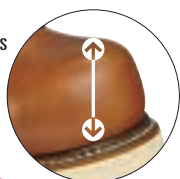




**804-4655**  
**6" Emperor Toe**  
**Composite Safety Toe**



MORE  
SPACIOUS  
TOE!



SOLE 2



889-7024

- » Tobacco oil-tanned leather
- » Removable slow recovery polyurethane footbed

- » Single-density polyurethane MAXwear Wedge™ outsole
- » Goodyear storm welt construction



75 EH SR

**+ COMP 75 SAFETY TOE**

**MEN'S** | D 7-12, 13, 14 | EE 7-12, 13, 14

**804-4367**  
**6" Emperor Toe**  
**Composite Safety Toe**



DUAL-DENSITY  
OUTSOLE



SOLE 7



889-7024

- » Black walnut oil-tanned leather
- » Removable slow recovery polyurethane footbed

- » Dual-density polyurethane comfort outsole with 90° heel
- » Goodyear storm welt construction



75 EH SR

**+ COMP 75 SAFETY TOE**

**MEN'S** | D 7-12, 13, 14 | EE 8-12, 13, 14 | 4E 8-12, 13, 14

**804-4368**  
**8" Emperor Toe**  
**Composite Safety Toe**



DUAL-DENSITY  
OUTSOLE



SOLE 7



889-7024

- » Black walnut oil-tanned leather
- » Removable slow recovery polyurethane footbed

- » Dual-density polyurethane comfort outsole with 90° heel
- » Goodyear storm welt construction



75 EH SR

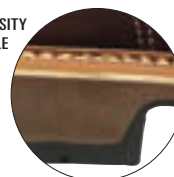
**+ COMP 75 SAFETY TOE**

**MEN'S** | D 7-12, 13, 14 | EE 8-12, 13, 14 | 4E 8-12, 13, 14

**804-4369**  
**Wellington Emperor Toe**  
**Composite Safety Toe**



DUAL-DENSITY  
OUTSOLE



SOLE 7



889-7024

- » Black walnut oil-tanned leather
- » Removable slow recovery polyurethane footbed

- » Dual-density polyurethane comfort outsole with 90° heel
- » Goodyear storm welt construction



75 EH SR

**+ COMP 75 SAFETY TOE**

**MEN'S** | D 7-12, 13, 14 | EE 8-12, 13, 14



\*Our **Made in USA** footwear is either Berry Compliant (100% Made in the USA with USA components) or Made in the USA with domestic and globally sourced components. Our Built in USA footwear uses all American hides and is assembled at our two union factories in Wisconsin.

## SAFETY TOE

### 804-4706 6" Waterproof Safety Toe



SOLE 5



- » Briar pitstop leather
- » Goodyear storm welt construction
- » Removable slow recovery polyurethane footbed
- » X-Stream Waterproof® membrane
- » Aztec premium lining
- » Thorogood's exclusive single density MAXwear 90 outsole



MEN'S D 8-12, 13, 14 EE 8-12, 13, 14

### 804-4708 8" Waterproof Safety Toe



SOLE 5



- » Briar pitstop leather
- » Goodyear storm welt construction
- » Removable slow recovery polyurethane footbed
- » X-Stream Waterproof® membrane
- » Aztec premium lining
- » Thorogood's exclusive single density MAXwear 90 outsole



MEN'S D 8-12, 13, 14 EEE 8-12, 13, 14

### 804-4710 11" Waterproof Wellington Safety Toe



SOLE 5



- » Briar pitstop leather
- » Goodyear storm welt construction
- » Removable slow recovery polyurethane footbed
- » X-Stream Waterproof® membrane
- » Aztec premium lining
- » Thorogood's exclusive single density MAXwear 90 outsole



MEN'S D 8-12, 13, 14 EE 8-12, 13, 14

### 804-4718 8" Waterproof Thinsulate B-400 Insulation Safety Toe



SOLE 5



- » Briar pitstop leather
- » Goodyear storm welt construction
- » Removable slow recovery polyurethane footbed
- » X-Stream Waterproof® membrane
- » Aztec premium lining
- » Thorogood's exclusive single density MAXwear 90 outsole
- » B-400 Thinsulate Insulation



MEN'S D 8-12, 13, 14 EE 8-12, 13, 14



\*Our **Made in USA** footwear is either Berry Compliant (100% Made in the USA with USA components) or Made in the USA with domestic and globally sourced components. Our Built in USA footwear uses all American hides and is assembled at our two union factories in Wisconsin.



## LOGGERS

814-3566

### 6" Lace-to-Toe Logger, Waterproof Non-Safety



SOLE 21



- » Waterproof apache crazyhorse leather
- » Leather Goodyear storm welt construction
- » Removable slow recovery polyurethane footbed
- » X-Stream Waterproof® membrane
- » Aztec premium lining
- » Vibram® Tacoma outsole



X-STREAM  
WATERPROOF

MEN'S | D 8-12, 13, 14 | EEE 8-12, 13, 14

804-3566

### 6" Lace-to-Toe Logger, Waterproof Safety Toe



SOLE 21



- » Waterproof apache crazyhorse leather
- » Leather Goodyear storm welt construction
- » Removable slow recovery polyurethane footbed
- » X-Stream Waterproof® membrane
- » Aztec premium lining
- » Vibram® Tacoma outsole



X-STREAM  
WATERPROOF

MEN'S | D 8-12, 13, 14 | EEE 8-12, 13, 14

804-3510

### 10" Lace-to-Toe Logger, Waterproof Thinsulate B-400 Insulation Safety Toe



SOLE 21



- » Waterproof apache crazyhorse leather
- » Leather goodyear storm welt construction
- » Removable slow recovery polyurethane footbed
- » X-Stream Waterproof® membrane
- » Aztec premium lining
- » B-400 Thinsulate insulation
- » Vibram® Tacoma outsole



X-STREAM  
WATERPROOF

Thinsulate  
Ultra  
INSULATION

MEN'S | D 8-12, 13, 14 | EEE 8-12, 13, 14



\*Our **Made in USA** footwear is either Berry Compliant (100% Made in the USA with USA components) or Made in the USA with domestic and globally sourced components. Our Built in USA footwear uses all American hides and is assembled at our two union factories in Wisconsin.

## EXTENDED SIZES

### 814-4550 6" American Heritage Non-Safety



SOLE 7



889-6007



- » Tobacco oil-tanned full-grain leather
- » Removable dual-density Ultimate Shock Absorption™ footbed on Poron® comfort cushion insole
- » Dual-density polyurethane comfort outsole with 90° heel
- » Goodyear storm welt construction



MEN'S B 9-12, 13 D 7-12, 13, 14, 15, 16, 17, 18 EE 7-12, 13, 14, 15, 16, 17, 18 4E 8-12

### 814-4549 8" American Heritage Non-Safety



SOLE 7



889-6007



- » Tobacco oil-tanned full-grain leather
- » Removable dual-density Ultimate Shock Absorption™ footbed on Poron® comfort cushion insole
- » Dual-density polyurethane comfort outsole with 90° heel
- » Goodyear storm welt construction



MEN'S B 9-12, 13 D 7-12, 13, 14, 15, 16, 17, 18 EE 8-12, 13, 14, 15, 16, 17, 18 4E 8-12

### 804-4203 6" American Heritage Safety Toe



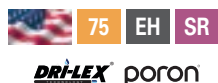
SOLE 7



889-6007



- » Black walnut oil-tanned leather
- » Removable dual-density Ultimate Shock Absorption™ footbed on Poron® comfort cushion insole
- » Dual-density polyurethane comfort outsole with 90° heel
- » Goodyear storm welt construction



MEN'S B 9-12, 13 D 7-12, 13, 14, 15, 16, 17, 18 EE 8-12, 13, 14 EEE 8-12, 13, 14, 15, 16, 17, 18

### 804-4204 8" American Heritage Safety Toe



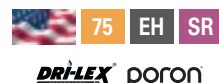
SOLE 7



889-6007



- » Black walnut oil-tanned leather
- » Removable dual-density Ultimate Shock Absorption™ footbed on Poron® comfort cushion insole
- » Dual-density polyurethane comfort outsole with 90° heel
- » Goodyear storm welt construction



MEN'S B 9-12, 13 D 7-12, 13, 14, 15, 16, 17, 18 EE 8-12, 13, 14 EEE 8-12, 13, 14, 15, 16, 17, 18



\*Our **Made in USA** footwear is either Berry Compliant (100% Made in the USA with USA components) or Made in the USA with domestic and globally sourced components. Our Built in USA footwear uses all American hides and is assembled at our two union factories in Wisconsin.







**GENflex<sup>3</sup>**

All day comfort from the ground up,  
these boots were designed  
with little to no “break-in” period.



Thorogood's exclusive GEN-flex3® technology  
features multi-directional traction outsoles,  
enhanced support, cushioned comfort, and  
forefoot flexibility.



**NO COMPROMISE...**



**IN COMFORT**

- Lightweight and flexible
- Multi-layer cushion insole
- Shock absorbing



**IN PROTECTION**

- Waterproof
- Composite Safety Toe



**IN GRIP**

- Multi-directional traction lug outsole
- Oil- and slip-resisting



**804-4456**  
**6" Waterproof**  
**Composite Safety Toe**



SOLE 10



- » Brown waterproof, tumbled, oiled, full-grain leather
- » Polyurethane removable footbed / Special EVA cushion flex insole
- » X-Stream Waterproof® membrane
- » GEN-flex<sup>3</sup>® dual-density rubber / EVA outsole
- » Goodyear storm welt construction

75 EH NM WP SR

+ COMP 75 SAFETY TOE X-STREAM WATERPROOF

MEN'S M 7-12, 13, 14 W 7-12, 13, 14

**804-4459**  
**8" Waterproof / Insulated**  
**Composite Safety Toe**



SOLE 10



- » Brown waterproof, tumbled, oiled, full-grain leather
- » Polyurethane removable footbed / Special EVA cushion flex insole
- » GEN-flex<sup>3</sup>® dual-density rubber / EVA outsole
- » X-Stream Waterproof® membrane
- » Goodyear storm welt construction
- » 400 grams of 3M™ Thinsulate™ Ultra Insulation

75 EH NM WP SR

+ COMP 75 SAFETY TOE X-STREAM WATERPROOF 3M Thinsulate™ Ultra INSULATION

MEN'S M 7-12, 13, 14 W 7-12, 13, 14

**804-4450**  
**Waterproof Wellington**  
**Composite Safety Toe**



SOLE 10



- » Brown waterproof, tumbled, oiled, full-grain leather
- » Polyurethane removable footbed / Special EVA cushion flex insole
- » X-Stream Waterproof® membrane
- » GEN-flex<sup>3</sup>® dual-density rubber / EVA outsole
- » Goodyear storm welt construction

75 EH NM WP SR

+ COMP 75 SAFETY TOE X-STREAM WATERPROOF

MEN'S M 7-12, 13, 14 W 7-12, 13, 14



**GENflex2®**



## NO COMPROMISE...



### IN **COMFORT**

- Lightweight and flexible
- Multi-layer cushion insole
- Shock absorbing



### IN **PROTECTION**

- Composite Safety Toe



### IN **GRIP**

- Multi-directional traction lug outsole
- Oil- and slip-resisting

**804-4446**

**6" Plain Toe**

**Composite Safety Toe**



SOLE 9



- » Brown tumbled, oiled, full-grain leather
- » Polyurethane removable footbed / Special EVA cushion flex insole

- » GEN-flex2® dual-density rubber / EVA outsole
- » Goodyear storm welt construction

**75 EH NM SR**

**+ COMP 75 SAFETY TOE** **ULTRA LIGHT**

**MEN'S** | M 7-12,13,14 | W 7-12,13,14

**804-4448**

**8" Plain Toe**

**Composite Safety Toe**



SOLE 9



- » Brown tumbled, oiled, full-grain leather
- » Polyurethane removable footbed / Special EVA cushion flex insole

- » GEN-flex2® dual-density rubber / EVA outsole
- » Goodyear storm welt construction

**75 EH NM SR**

**+ COMP 75 SAFETY TOE** **ULTRA LIGHT**

**MEN'S** | M 7-12,13,14 | W 7-12,13,14



## 804-4445 6" Lace-to-Toe Composite Safety Toe



SOLE 9



- » Brown tumbled, oiled, full-grain leather
- » Polyurethane removable footbed / Special EVA cushion flex insole

- » GEN-flex<sup>2</sup>® dual-density rubber / EVA outsole
- » Goodyear storm welt construction

75 EH NM SR

+ COMP 75 SAFETY TOE ULTRA LIGHT 3M Scotchlife HI-VIS

MEN'S M 7-12, 13, 14, 15 W 7-12, 13, 14, 15

## 804-6444 6" Lace-to-Toe Composite Safety Toe



SOLE 9



- » Black oiled full-grain leather
- » Polyurethane removable footbed / Special EVA cushion flex insole

- » GEN-flex<sup>2</sup>® dual-density rubber / EVA outsole
- » Goodyear storm welt construction

75 EH NM SR

+ COMP 75 SAFETY TOE ULTRA LIGHT 3M Scotchlife HI-VIS

MEN'S M 7-12, 13, 14 W 7-12, 13, 14

## 804-4440 Side-Zip Wellington Composite Safety Toe



SOLE 9



- » Brown tumbled, oiled, full-grain leather
- » Polyurethane removable footbed / Special EVA cushion flex insole

- » GEN-flex<sup>2</sup>® dual-density rubber / EVA outsole
- » Goodyear storm welt construction

75 EH NM SR

+ COMP 75 SAFETY TOE ULTRA LIGHT

MEN'S M 7-12, 13, 14, 15 W 7-12, 13, 14, 15





**804-4278**

NEW

 **DUAL-GENDER SIZING** [SEE CHART]

## 6" Work Boot

## Safety Toe



SOLE 8



- » Brown oiled nubuck leather
- » Removable single-density polyurethane SHOCK ZONE footbed
- » Goodyear storm welt construction
- » Rubber chevron outsole

75 EH SR

 **MEN'S** M 8-12, 13, 14 W 8-12, 13, 14

804-4279

NEW

 **DUAL-GENDER SIZING** [SEE CHART]

### 8" Work Boot

## Safety Toe



## SOLE 8



- » Brown oiled nubuck leather
- » Removable single-density polyurethane SHOCK ZONE footbed
- » Goodyear storm welt construction
- » Rubber chevron outsole

75 EH SR

 **MEN'S** M 8-12, 13, 14 W 8-12, 13, 14

804-4281

NEW

 **DUAL-GENDER SIZING** [SEE CHART]

## 11" Wellington

## Safety Toe



## SOLE 8



- » Brown oiled nubuck leather
- » Removable single-density polyurethane SHOCK ZONE footbed
- » Goodyear storm welt construction
- » Rubber chevron outsole

75 EH SR

 **MEN'S** M 8-12, 13, 14 W 8-12, 13, 14



**DUAL  
GENDER  
SIZING**

▲ For Women's size, order Men's size below it on chart. (example: Women's 6, order Men's 4)

[illegible]



814-3165

NEW

6" Waterproof Plain Toe  
Sport Boot  
Non-Safety



SOLE 11



- » Trail crazyhorse leather
- » Removable single-density polyurethane SHOCK ZONE footbed
- » Direct attach construction

- » Thorogood's exclusive dual-density PU/TPU Thoro-flex outsole

EH WP SR

WATERPROOF

MEN'S M 8-12, 13, 14 W 8-12, 13, 14

804-3165  
Composite Safety Toe

75 EH WP SR

+ COMP 75 SAFETY TOE WATERPROOF

MEN'S M 7-12, 13, 14 W 7-12, 13, 14

804-6135

NEW

6" Waterproof Plain Toe Sport Boot  
Composite Safety Toe



SOLE 11



- » Trail crazyhorse leather
- » Removable single-density polyurethane SHOCK ZONE footbed
- » Lightweight, flexible, multi-layered puncture plate

- » Direct attach construction
- » Thorogood's exclusive dual-density PU/TPU Thoro-flex outsole

75 EH WP SR

+ COMP 75 SAFETY TOE WATERPROOF

MEN'S M 8-12, 13, 14 W 8-12, 13, 14

804-3166

NEW

6" Quick Release Boot  
Composite Safety Toe



SOLE 11



- » Trail crazyhorse leather
- » Removable single-density polyurethane SHOCK ZONE footbed

- » Direct attach construction
- » Thorogood's exclusive dual-density PU/TPU Thoro-flex outsole

75 EH NM SR

+ COMP 75 SAFETY TOE

MEN'S M 8-12, 13, 14 W 8-12, 13, 14

804-3169

NEW

Waterproof Wellington  
Composite Safety Toe



SOLE 11



- » Trail crazyhorse leather
- » Removable single-density polyurethane SHOCK ZONE footbed

- » Direct attach construction
- » Thorogood's exclusive dual-density PU/TPU Thoro-flex outsole

75 EH NM WP SR

+ COMP 75 SAFETY TOE WATERPROOF

MEN'S M 8-12, 13, 14 W 8-12, 13, 14



## SUPERIOR FOOTWEAR TECHNOLOGY

Thorogood features built-in advantages that give the wearer an on-the-job edge.



### ASR - Athletic Slip Resisting

Footwear featuring ASR technology is designed for sure-footed traction in any environment. The ASR designation signifies high-performance athletic comfort and superior footing, giving you the confidence to stand tall where others fear to tread.

- Exclusive tread pattern includes gripping pad and a rugged lug for maximum traction, indoors and out
- Dispersion channels shed moisture for superior slip resistance
- Specially formulated rubber sole grips surfaces for sure footing
- Lightweight, high-performance, true athletic construction
- 100% non-metallic

### VGS - Visible Gel System

You can see exactly what makes Thorogood's exclusive Visible Gel System work so well: The improved shock-absorption of the VGS insert absorbs heel-to-ground impact, distributing forces that can cause injuries and fatigue.

- Absorbs shock with every step
- InterActive cushioning system
- Reduces impact stress where it's needed most
- Tested to withstand 300 pounds of pressure
- Won't deflate and never loses performance

### SD - Static Dissipative

SD Footwear will provide for a resistance of between 10 to the 6th power ohms (1 megohm) and 10 to the 8th power (100 megohms) resistance when 50 volts are applied via an electrode to the hand of a person wearing the SD test sample on a conductive ground plate. SD footwear meets or exceeds ASTM F2413-11 (Safety Toe) or F2892-11 (Non-Safety Toe)

- Constructed to reduce excess static electricity discharge
- Protects sensitive electronic equipment
- Reduces hazards due to excessively low footwear electrical resistance
- Provides protection from the possibility of electrical shock through conduction and resistance









804-4291

NEW

 **DUAL-GENDER SIZING** [SEE CHART]

### Crosstrex (MID)

## Composite Safety Toe



SOLE 13



- » Brown leather / brown mesh upper
- » Waterproof Membrane
- » Removable single-density polyurethane SHOCK ZONE footbed
- » Lightweight cement construction
- » Crossstrex 360 outsole


75 EH WP SR

**COMP 75 SAFETY TOE WATERPROOF**

	<b>MEN'S</b>	M 8-12, 13, 14	W 8-12, 13, 14
---	--------------	----------------	----------------

804-6293

NEW

 **DUAL-GENDER SIZING** [SEE CHART]

### Crosstrex (LOW)

## Composite Safety Toe



SOLE 13



- » Black leather / black mesh upper
- » Waterproof membrane
- » Removable single-density polyurethane SHOCK ZONE footbed
- » Lightweight cement construction
- » Crosstrex 360 outsole

75 EH WP SR

 **COMP 75 SAFETY TOE**  **WATERPROOF**

	<b>MEN'S</b>	M 8-12, 13, 14	W 8-12, 13, 14
---	--------------	----------------	----------------

804-6292

NEW

 **DUAL-GENDER SIZING** [SEE CHART]

### Crosstrex (MID)

## Composite Safety Toe



SOLE 13



- » Black leather / black mesh upper
- » Waterproof membrane
- » Removable single-density polyurethane SHOCK ZONE footbed
- » Lightweight cement construction
- » Crosstrex 360 outsole

75 EH WP SR

**COMP 75 SAFETY TOE WATERPROOF**

	<b>MEN'S</b>	M 8-12, 13, 14	W 8-12, 13, 14
---	--------------	----------------	----------------



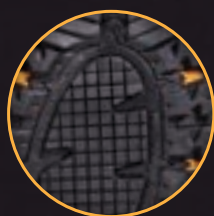


## Cross Over to Protection

**Multi-purpose footwear, a boot that's a crossover between one style or function and another.**

THESE BOOTS ARE PERFECT FOR:

Oil Industry · Chemical Industry · Food Service and Processing  
Animal Processing · Farming, Ranching, and Ag Industry  
Construction and Property Development



## GREATER SLIP RESISTANCE

Sure footing with exclusive Z-Trac outsole that provides a gripping pad and a rugged lug for traction indoors and out.



804-4808

 **DUAL-GENDER SIZING** [SEE CHART]

## 7" Waterproof

## Composite Safety Toe

SOLE 14

**Z-TRAC**

- » Brown waterproof tumbled full-grain leather shaft / black armor-coated waterproof abrasion-resisting vamp and counter
- » Removable single-density polyurethane SHOCK ZONE footbed
- » Z-Trac ASR rubber outsole with integrated EVA impact pads
- » Cement construction

75 EH WP NM SR

 COMP 75 SAFETY TOE  WATERPROOF

 **MEN'S** | M 4-12, 13, 14, 15 | W 7-12, 13, 14, 15



804-4810

## 8" Waterproof Wellington

## Composite Safety Toe

SOLE 14

**Z-TRAC**

- » Brown waterproof tumbled full-grain leather shaft / black armor-coated waterproof abrasion-resisting vamp and counter
- » Removable single-density polyurethane SHOCK ZONE footbed
- » Z-Trac ASR rubber outsole with integrated EVA impact pads
- » Cement construction

75 EH WP NM SR

 COMP 75 SAFETY TOE  WATERPROOF

**MEN'S** | M 7-12, 13, 14, 15 | W 7-12, 13, 14, 15



804-4812

NEW

## 12" Waterproof Wellington

## I-MET<sup>2</sup>

## Composite Safety Toe

SOLE 14

**Z-TRAC**

- » Brown waterproof tumbled full-grain leather shaft / black armor-coated waterproof abrasion-resisting vamp and counter
- » Removable single-density polyurethane SHOCK ZONE footbed
- » Z-Trac ASR rubber outsole with integrated EVA impact pads
- » Cement Construction

75 EH WP I-M<sup>2</sup> NM SR

**COMP 75 SAFETY TOE** **WATERPROOF**

<b>MEN'S</b>	M 8-12, 13, 14	W 8-12, 13, 14
--------------	----------------	----------------



DUAL  
GENDER  
SIZING

▲ For Women's size, order Men's size below it on chart. (example: Women's 6, order Men's 4)

		Men's (examples: Women's 6 or 6 1/2)																				
WOMEN'S	5	5 1/2	6	6 1/2	7	7 1/2	8	8 1/2	9	9 1/2	10	10 1/2	11	11 1/2	12							
MEN'S	3	3 1/2	4	4 1/2	5	5 1/2	6	6 1/2	7	7 1/2	8	8 1/2	9	9 1/2	10	10 1/2	11	11 1/2	12	13	14	15

Z-TRAC



Z-TRAC



- 1 Waterproof membrane
- 2 Removable high-density polyurethane footbed
- 3 EVA midsole for extra cushion
- 4 EVA inserts provide shock absorption and cushion

## WATERPROOF Sport Hiker

with Composite Safety Toe

804-4038

Waterproof Z-Trac Sport Hiker  
Composite Safety Toe



- » Brown waterproof, tumbled, full-grain leather
- » Removable polyurethane footbed
- » Waterproof membrane
- » Z-Trac ASR rubber outsole with integrated EVA impact pads
- » Cement construction

75 EH NM WP SR

+ COMP 75 SAFETY TOE WATERPROOF

MEN'S | M 8-12, 13, 14 | W 8-12, 13, 14



804-4541

 **DUAL-GENDER SIZING** [SEE CHART]

**6" I-MET**  
**Safety Toe**



---

SOLE 18



- » Black walnut oil-tanned full-grain leather
- » Removable polyurethane footbed on Poron® comfort cushion insole
- » Vibram® ALPHA+ outsole
- » Goodyear storm welt construction



**DRI-LEX®** poron®

	<b>MEN'S</b>	D 4-12, 13, 14, 15	EEE 8-12, 13, 14, 15
---	--------------	--------------------	----------------------

804-4831

## 8" I-MET<sup>2</sup> Emperor Toe Safety Toe



**MORE  
SPACIOUS  
TOE!**



---

SOLE 18



- » Black walnut oil-tanned full-grain leather
- » Removable polyurethane footbed on Poron® comfort cushion insole
- » Vibram® ALPHA+ outsole
- » Goodyear storm welt construction



**DRI-LEX®** poron®

<b>MEN'S</b>	<b>D 7-12, 13, 14</b>	<b>EE 8-12, 13, 14</b>	<b>EEE 8-12, 13, 14</b>
--------------	-----------------------	------------------------	-------------------------

804-4841

**Wellington I-MET<sup>2</sup>**  
**Safety Toe**



SOLE 18



- » Black walnut oil-tanned full-grain leather
- » Removable polyurethane footbed on Poron® comfort cushion insole
- » Vibram® ALPHA+ outsole
- » Goodyear storm welt construction



**DRI-LEX®** poron®

<b>MEN'S</b>	<b>D 8-14</b>	<b>EEE 8-14</b>
--------------	---------------	-----------------



**DUAL  
GENDER  
SIZING**

▲ For Women's size, order Men's size below it on chart. (example: Women's 6, order Men's 4)

[illegible]



First, we changed  
**metatarsal protection** forever.

Now, we've changed it for good.

#### IT'S ALL INSIDE:



Flexible I-Met²  
Integrated  
Metatarsal Guard

Foam padding

Safety  
toe

## I-MET²

### Integrated Metatarsal Guard

Thorogood® was the first to patent the integrated metatarsal guard, the I-MET®. But in the spirit of relentless innovation, we've done ourselves – and our customers – one better.

- Seamless, invisible, comfortable, and safe
- Flexible, impact-dissipating metatarsal guard
- Fully integrated with foam lining and protective toe cap

*You won't know it's there... until you need it.*

804-4616

8" Waterproof Lace-to-Toe **I-MET²**  
Composite Safety Toe



SOLE 16



- » Brown waterproof tumbled oil leather
- » Full-length removable polyurethane footbed

- » X-Stream Waterproof® membrane
- » Oil / slip-resisting chevron outsole
- » Goodyear storm welt construction

75 EH MT I-M² PR WP SR

+ COMP 75 SAFETY TOE

X-STREAM  
WATERPROOF

MEN'S | M 8-12, 13, 14 | W 8-12, 13, 14

804-4618

Waterproof Wellington **I-MET²**  
Composite Safety Toe



SOLE 16



- » Brown waterproof tumbled oil leather
- » Full-length removable polyurethane footbed

- » X-Stream Waterproof® membrane
- » Oil / slip-resisting rubber chevron outsole
- » Goodyear storm welt construction

75 EH MT I-M² PR WP SR

+ COMP 75 SAFETY TOE

X-STREAM  
WATERPROOF

MEN'S | M 8-12, 13, 14 | W 8-12, 13, 14



804-4320

▲ DUAL-GENDER SIZING [SEE CHART]

Slip-On **I-MET<sup>2</sup>**  
Composite Safety Toe

SOLE 15



- » Brown full-grain leather
- » Full-length removable polyurethane footbed

- » VGS-300 ASR dual-density rubber / EVA outsole
- » Cement construction

75 EH NM MT I-M<sup>2</sup> SR

+ COMP 75 SAFETY TOE ULTRA LIGHT

▲ MEN'S | M 4-12, 13, 14 | W 6-12, 13, 14

804-4312

▲ DUAL-GENDER SIZING [SEE CHART]

Hiker **I-MET**  
Safety Toe

SOLE 12



889-8000



- » Dark brown tumbled full-grain leather with black suede leather inserts and napa leather collar
- » Removable dual-density polyurethane SHOCK ZONE footbed with air flow vents

- » Dual-density rubber polyurethane outsole
- » Direct injection construction

75 EH MT I-M SR

▲ MEN'S | M 7-12, 13, 14, 15 | W 7-12, 13, 14, 15

804-4132

8" Side-Zip Wellington **I-MET**  
Safety Toe

SOLE 17



889-6007



- » Dark brown regal soggy leather
- » Removable dual-density Ultimate Shock Absorption™ footbed

- » Vibram® #582 outsole with 90° heel
- » Goodyear storm welt construction

75 EH MT I-M SR

▲ MEN'S | M 7-12, 13, 14 | W 7-12, 13, 14

NEW

804-4812

12" Waterproof Wellington  
**I-MET<sup>2</sup>**  
Composite Safety Toe

SOLE 14



Z-TRAC

- » Brown waterproof tumbled full-grain leather shaft / black armor-coated waterproof abrasion-resisting vamp and counter

- » Removable single-density polyurethane SHOCK ZONE footbed
- » Z-Trac ASR rubber outsole with integrated EVA impact pads
- » Cement Construction

75 EH MT WP I-M<sup>2</sup> NM SR

+ COMP 75 SAFETY TOE WATERPROOF

▲ MEN'S | M 8-12, 13, 14 | W 8-12, 13, 14

DUAL  
GENDER  
SIZING

▲ For Women's size, order Men's size below it on chart. (example: Women's 6, order Men's 4)

WOMEN'S	5	5½	6	6½	7	7½	8	8½	9	9½	10	10½	11	11½	12				
MEN'S	3	3½	4	4½	5	5½	6	6½	7	7½	8	8½	9	9½	10	10½	11	11½	12

## SOLE COMPARISONS

**THOROGOOD® USA EXCLUSIVE**

1	2	3	4	5	6	7
A A C B A	A A C B B	A A C B A	A A B B B	A A B B B	B A C C B	A A C B A

**THOROGOOD® EXCLUSIVE**

9	10	11	14	15
A A C A A	A A A A A	B A C C B	A A A B A	A A C C A

**VIBRAM® USA**

17	18	21
A A A A B	A A A A B	A C A B A

**THOROGOOD®**

8	12	13	13	16
A A A A A	A A C B A	B B C C B	B B C C B	A A A A A

**KEY**

- Abrasion-Resisting
- Oil-Resisting
- Heat-Resisting
- Chip-Resisting
- Slip-Resisting

A = BEST  
B = BETTER  
C = GOOD

## GENUINE THOROGOOD FOOTBEDS

 <b>889-6007</b> <b>Ultimate Shock-Absorption™</b> MEN'S SIZES Small 7-9   Medium 9½-11 Large 11½-13   XL 14-15	 <b>889-6008</b> <b>Comfort 125</b> Single-density polyurethane with contour heel cup MEN'S SIZES Small 7-9   Medium 9½-11   Large 11½-13.14 WOMEN'S SIZES Small 6-7½   Medium 8-9½   Large 10-11½
--	--

 <b>889-7024</b> <b>Compression Foam</b> MEN'S SIZES X-Small 5-6½   Small 7-8½ Medium 9-11½   Large 12+
--

 <b>889-8000</b> <b>The Deuce SHOCK ZONE</b> Dual-density polyurethane MEN'S SIZES X-Small 4-5½   Small 6-7½   Medium 8-9½ Large 10-11½   XL 12-13½   XXL 14-15
---

## LACE CHARMS

 <b>889-7020</b> <b>Thorogood USA Flag Lace Charm</b> Gunmetal base with USA flag Minimum order 500 pieces (250 pair)
---



## LIMITED WARRANTY

Weinbrenner Shoe Company, Inc. ("Thorogood Shoes") warrants solely to those consumer purchasers ("purchasers") who, for their own use or use by another consumer end user, purchase the Thorogood® branded products ("Products") directly from an authorized seller ("Authorized Seller") that the Products manufactured by Thorogood Shoes are free from defects in material and workmanship for a period of one year from the date of purchase.

This warranty covers normal use only of the Products. Thorogood Shoes will not assume responsibility for any failure of the Products incurred by misuse, abuse, neglect or exposure to a substance or an environment that degrades the Products. Normal sole wear of the Products is not considered to be a defect in material and workmanship.

Products considered to be defective must be returned to the Authorized Seller from which the Products were originally purchased or issued with the original purchase receipt or issuer's invoice record. Our policy is to honor Product warranties only on Products purchased from an Authorized Seller of Thorogood® Products and only when accompanied by the original purchase receipt or proof of purchase. If Products are purchased from an unauthorized seller this limited warranty will not be valid.

Defective Products will be repaired or replaced at the discretion of Thorogood Shoes. Any replacement will be for the same style and size of the returned defective footwear Products.

This is a limited warranty. The obligations set forth in the preceding paragraphs are Thorogood Shoes' sole obligation and the purchaser's exclusive remedy. Thorogood Shoes makes no other express warranty. Any implied warranty of merchantability or fitness for a particular purpose that may be applicable to the Products is limited in duration to the duration of this limited warranty. Some States do not allow limitations on how long an implied warranty lasts, so the above limitation may not apply to you.

Thorogood Shoes shall not be liable for any direct, or indirect, incidental or consequential damages even if it has been advised of possibility of such damages. Some States do not allow the exclusion or limitation of incidental or consequential damages, so the above limitation or exclusion may not apply to you.

This limited warranty shall be governed by, and construed and interpreted in accordance with, the local laws of the State of Wisconsin (without application of its conflicts of laws principles), except only to the extent replaced or precluded by other law of mandatory application. This warranty gives you specific legal rights, and you may also have other rights which vary from State to State.

## RETURNED GOODS POLICY

Inspection Requirement- Weinbrenner is committed to quality. Upon receipt of Products from Weinbrenner, Dealer shall inspect the Products for damage and defects. Products that are damaged or otherwise defective must be removed from inventory and either returned to Weinbrenner or repaired prior to being offered for sale to end-user customers.

Defective Merchandise- No written permission is required for Dealer's return of up to 6 pair of defective merchandise. Please contact Customer Service for returns over 6 pair. Credit will be issued on footwear with defective workmanship or materials. Credit may be pro-rated based on the general condition and length of wear. If footwear has been abused, cut, punctured, scraped or used for unintended purposes, the policy is not in force. **WE DO NOT ACCEPT RETURNED FOOTWEAR DIRECTLY FROM THE CONSUMER.** When a defect is minor, eyelet, hook, D-Ring, or rivet replacement, seam stitching, sole or heel reattachment, etc., your customer may be happy with a quick and inexpensive repair. Weinbrenner will reimburse dealers up to \$15.00/pair for such repairs done at a local shoe repair shop. Send a paid receipt to WSC Customer Service for reimbursement/credit.

Non-Defective Merchandise- Prior written permission is required on any return of non-defective merchandise. Contact your sales representative.

## PRODUCT CHANGE NOTICE

This Thorogood catalog is accurate as of the date of printing. However, in our never ending pursuit of better materials and construction there may be product specification changes made during the year without notice. The Thorogood price list is your official list of stock numbers available.

THOROGOOD®, THE ULTIMATE®, ULTIMATE SHOCK-ABSORPTION™, SOFT STREETS™, I-MET®, HELLFIRE™, and SHOE IN® are registered trademarks of the Weinbrenner Shoe Company, Inc.

- VIBRAM® and the Yellow Octagonal Label are registered trademark of Vibram S.p.A. of Italy. Quabaug Corporation, North Brookfield, MA, is the North American manufacturer of Vibram soling products under exclusive license.
- KEVLAR® is a registered trademark of DuPont.
- 3M™ THINSULATE™, THINSULATE™ ULTRA, and SCOTCHLITE™ are trademarks of 3M™.
- PORON® is a registered trademark of Rogers Corporation.
- DRI-LEX® is a registered trademark of Faytex Corporation.
- MAXUM® is a registered trademark of Meramec Group.
- COOLMAX® is a registered trademark of Invista.
- L-PROTECTION® is a registered trademark of Lenzi Egisto S.p.A.
- GORE-TEX®, GUARANTEED TO KEEP YOU DRY®, GORE®, and designs are trademarks of W. L. Gore & Associates, Inc.

## KEY

To make your selection easier, we have included symbols that call your attention to important features built into the shoes throughout this catalog. **Tested and certified to meet the rigid standards established by the American Standard Test Method (ASTM), all of our safety footwear meets or exceeds the highest ASTM F2413-11 or ASTM F2892-11 ratings (where applicable).**



### UNION MADE IN THE USA\*

\*Weinbrenner Shoe Company manufactures our Made in USA footwear at its two union factories in Wisconsin. Our Made in USA footwear is either Berry Compliant (100% Made in the USA with USA components) or Made in the USA with domestic and globally sourced components. Our Built in USA footwear uses all American hides and is assembled at our two union factories in Wisconsin.



### BERRY COMPLIANT (100% USA MADE)

Made in the USA with USA components.



Thorogood BBP X-Stream Waterproof® and Stedair™ linings are blood-borne pathogen penetration compliant, for at least one hour when tested according to ASTM F 1671, Standard Test Method for Resistance of Materials used in Protective Clothing.



Composite safety toe caps provide the same protection as steel, but are non-metallic, corrosion resistant, transmit less cold and weigh less.



Engineered with GORE-TEX® product technology. Durable waterproof, windproof, and breathable protection for optimized comfort, guaranteed.



Class I/75 footwear retains a .500 inch (1/2 inch) for men's and .468 inch (15/32 inch) for women's or greater clearance after a nominal impact of 75 foot-pounds (101.7J), i.e., a 50 pound weight dropped, reaching 117.9 ± 2.4 inches per second velocity at impact. COMPRESSION: Class C/75 footwear retains a .500 inch (1/2 inch) after compression of 2500 lbs. (11,121 N) or greater.



Constructed or manufactured with electric shock-resisting soles and heels capable of withstanding an application of 18,000 volts (root mean square (RMS) value) at 60 Hz for 1 minute with no current flow or leakage current in excess of 1.0 milliamperes under dry conditions.



are indicated by a yellow highlight.



A breakthrough in metatarsal protection, exclusively from Thorogood® features the only internal, invisible, Metatarsal Guard that's completely integrated with the safety toe cap.



Exclusively from Thorogood® Footwear. The polymer compound used in the I-MET2® absorbs and deflects impact to the instep of the foot. Like the original I-MET®, I-MET2® is an internal, invisible, Metatarsal Guard that's completely integrated with the protective toe cap.



Featuring 3M™ Thinsulate™ insulation



3M Thinsulate Ultra™ contains a minimum of 400 grams+ of 3M™ Thinsulate Ultra Insulation throughout.



Class ASTM F2413-11 Mt/75 footwear retains a 1.0 inch clearance for men's and .937 inch clearance for women's, after a nominal impact of 75 foot pounds (101.7J), i.e., a 50 lb. weight dropped, reaching 117.9 ± 2.4 inches per second velocity at impact 3.5 inches in from the toe of the footwear (3.375 inches on women's).



These styles are 100% non-metallic utilizing composite toes and non-metallic hardware (eyelets). These features will help minimize the chance of marking / scratching work surfaces and will not activate security screening devices.



Footwear bearing the SR/USA label have been manufactured according to USPS 89D and meet sole slip-resistance (ASTM F 489), domestic source end product, water resistance (ASTM D 2099) requirements. They are Certified by the US Postal Service and Department of Navy, Navy Clothing, and Textile Research Facility.



Puncture-resisting through the sole and heel area at a force load of 1200N (270 lbf). Unique textile insole material is flexible and puncture-resisting.



Footwear is tested for ASTM F2913-11 SATRA Test Method TM144 (or Mark II) industry criteria for slip-resisting footwear.



SD Footwear will provide for a resistance of between 10 to the 6th power ohms (1 megohm) and 10 to the 8th power (100 megohms) resistance when 50 volts are applied via an electrode to the hand of a person wearing the SD test sample on a conductive ground plate.



Complies with NFPA 1971 & 1992



Meets the requirements of NFPA 1971 Standard on Protective Ensemble for Structural Fire Fighting, 2013 Edition.



ULTRA LIGHT Lightweight materials and construction designed with foot comfort in mind.



Waterproof barrier keeps water out.



Waterproof, breathable membrane keeps feet dry while instantly venting moisture and body heat.



Waterproof, breathable membrane keeps feet dry and comfortable. Blood-borne pathogen penetration compliant.



Meets the requirements of NFPA 1977 Protective Clothing and Equipment for Wildland Fire Fighting, 2016 Edition.



**THOROGOOD®**

108 S. POLK STREET · MERRILL, WISCONSIN 54452

1-800-826-0002

---

THOROGOODSHOES.COM     #THOROGOODSHOES

---

ISO 9001 CERTIFIED SINCE 1998 · AN EMPLOYEE-OWNED SHOE COMPANY